



DCB, Inc.
2949 CR 1000 E
Dewey, Illinois
61840

217.897.6600 Tel
800.432.2638 Toll Free
217.897.1331
www.dcbnet.com

January 16, 2009

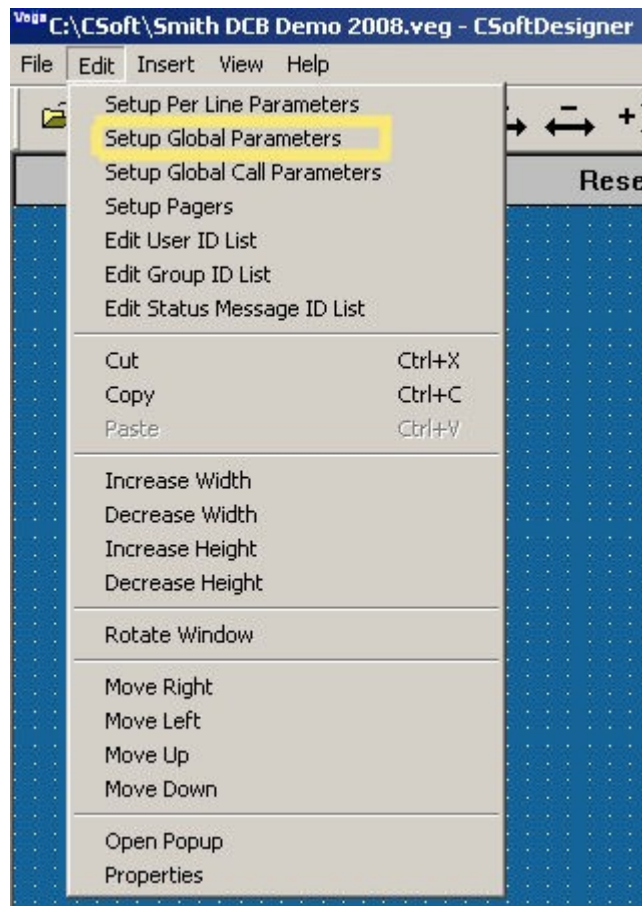
Bosch Telex C-Soft and MS Windows XP

Matching the Network Adapter Numbers

The C-Soft software will use Network Adapter numbers 1, 2 3 or 4 only. The C-Soft network adapter number must match the Microsoft Windows network adapter you wish to use. C-Soft numbers the adapters 0,1,2 and 3. Microsoft numbers the adapters in the order they appear in the "Advance Settings" screen shown on the last page of this document. The top of the Microsoft list is 1, second down is 2, etc. Microsoft 1 is Telex 0, etc.

It is possible to have more than 4 Network Adapters in a MS Windows XP system. If the adapter you wish to use is not one of the first four, you can move it up the list to match the C-Soft settings. See the last 2 pages of this document.

Below is the Global Parameters screen where you choose the adapter number in C-Soft:



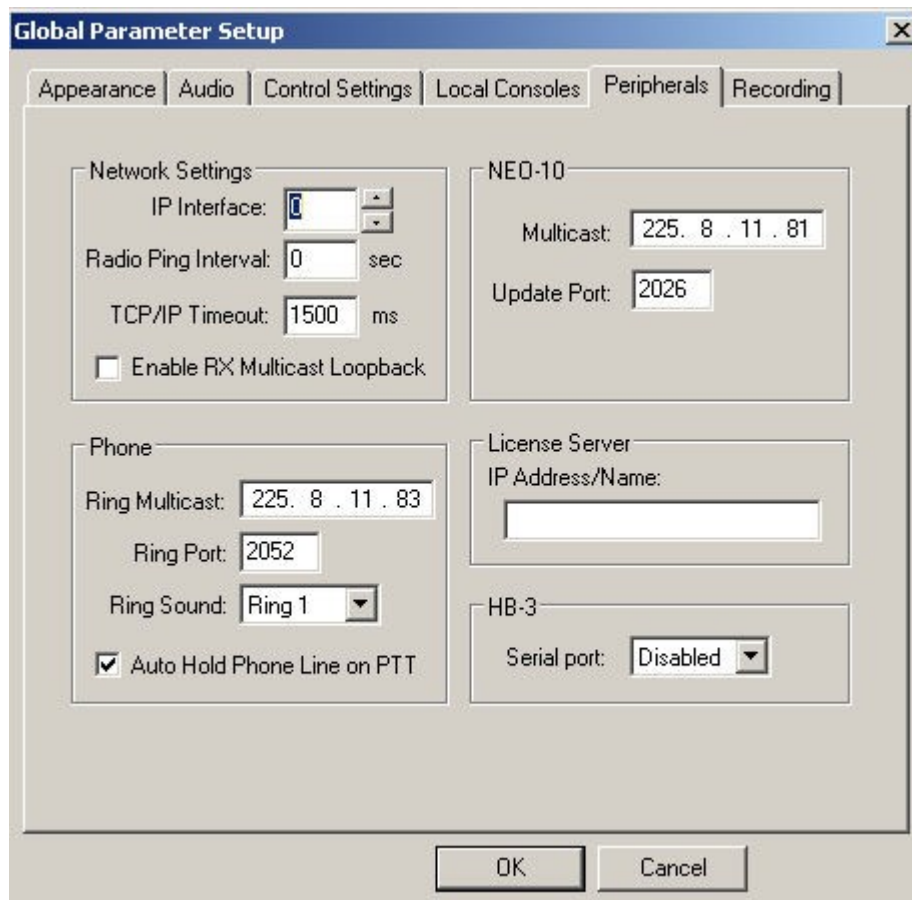


DCB, Inc.
2949 CR 1000 E
Dewey, Illinois
61840

217.897.6600 Tel
800.432.2638 Toll Free
217.897.1331
www.dcbnet.com

The “IP Interface” box shown below is where you select one of the four Network Adapters that C-Soft can use. It is under the “Peripherals” tab on the left hand side, the first of the “Network Settings” options.

You may wish to set a ping time between the C-Soft console and the IP-223 when using a wireless 3G modem. The carrier may not like the constant traffic, but without the ping, if there is a long voice idle time, the start of a new radio/console conversation may be delayed by several seconds until the cell site renews the connection. In the example below, the ping will be once a minute. The “Radio Ping Interval” is just below “IP Interface”.

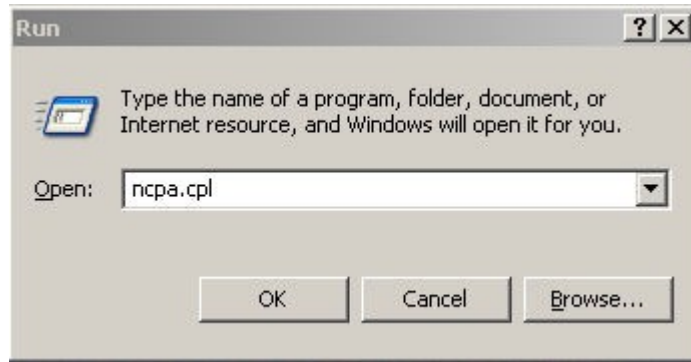




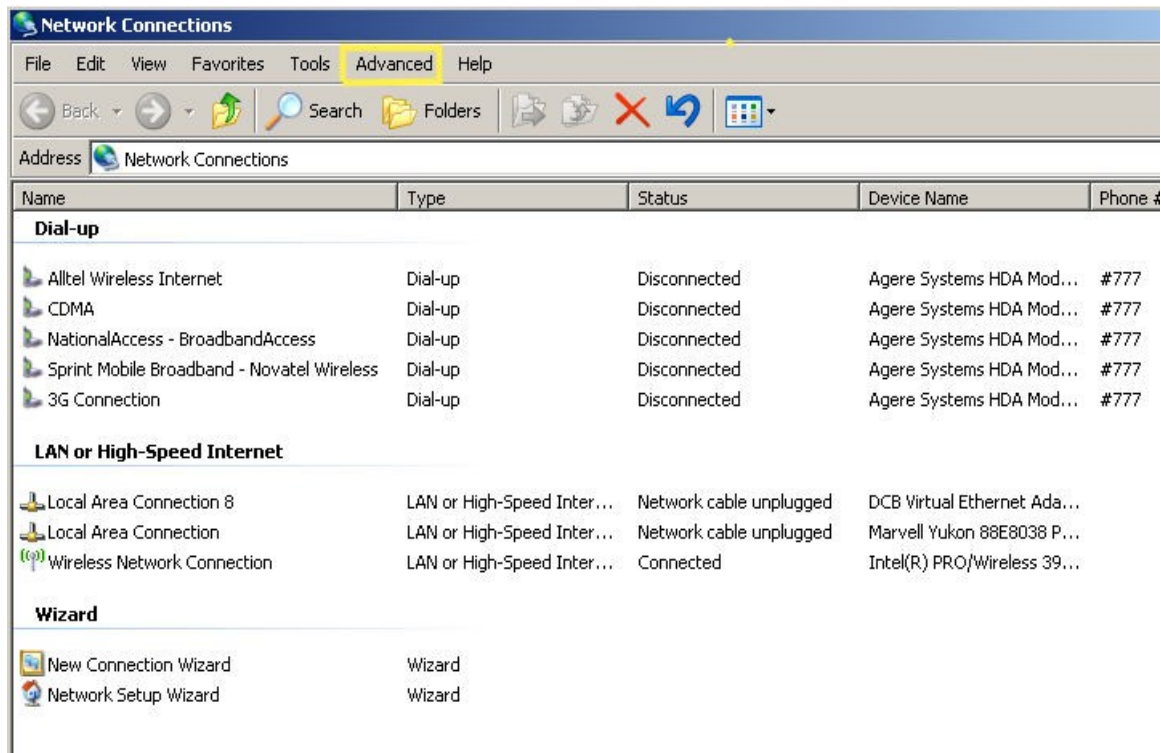
DCB, Inc.
2949 CR 1000 E
Dewey, Illinois
61840

217.897.6600 Tel
 800.432.2638 Toll Free
 217.897.1331
 www.dcbnet.com

If you need to move the Network Adapter up or down in the list on your XP machine to match the C-Soft console, the following screens illustrate the process. First, click on Start, then Run, and run “ncpa.cpl” If you are familiar with Windows networking, there are other paths to get to the Network Connections window.



When you run “ncpa.cpl”, it will open the Network Connections window. Click on “Advanced”, outlined in yellow, below. There are 2 views shown here, the detail view, where you can see the full adapter name, and the icon view, where you will need to hover over the icons with the mouse pointer to get the full adapter name.





DCB, Inc.
2949 CR 1000 E
Dewey, Illinois
61840

217.897.6600 Tel
800.432.2638 Toll Free
217.897.1331
www.dcbnet.com

In the Advanced Settings box, under the Adapters and Bindings tab, you can move the order of the Network Adapters in the top box labeled “Connections:”, shown below. Highlight the Local Area Connection and move it up and down with the **green arrows** to the right of the box.

The top position in the box is adapter 1, second down is 2, 3rd down is 3, 4th down is 4. This corresponds to C-Soft IP Interface numbers 0, 1, 2, and 3. Select “OK” when matched to the C-Soft IP Interface Network Settings.

