



UNIVERSAL SWITCH

8, 16, 24 or 32 Port Universal Switch for RS-232 async device access



FEATURES

- 8, 16, 24 or 32 ports
- 1200 or 9600 bps port speeds
- Connect any port to any port
- Non-cryptic English prompts
- Name or port number switching
- Control lead or code disconnect
- Connect to DCB modem, DSU and mux NMP ports
- Connect to any other async devices
- Ideal for local or remote management

DESCRIPTION

The DCB Universal Switch connects any one of its ASYNC RS-232 ports to any other port. Connection is made by entering a port number or port name. Disconnection is accomplished by entering a disconnect code string or by lowering an RS-232 control lead on the accessed port. The DCB Universal Switch can be used to connect modems, terminals, PCs, RS-232 control ports, etc. at speeds of 1200 or 9600 bps.

The Universal Switch is available in 8, 16, 24 or 32 port units.

The Universal Switch allows both local terminal and remote dial-in access. All ports can be active at the same time. The user always gets positive feedback, there is no blind switching. Before connect and after disconnect, the Universal Switch gives the user a Connect >> (or user defined) prompt. Port switching requires no cryptic code entry. Ports can be named and accessed by that name or by port number.

If the device being accessed can lower an RS-232 control lead on command, as DCB products can, the hardware disconnect method can be used. This makes the switch 100% data transparent and suitable for use between devices that do binary file transfers. Data transparency insures that no control codes will inadvertently cause a disconnect.

The DCB Universal Switch is ideal for connecting to the control ports of bridges, routers, hubs, multiplexers, phone systems, servers, etc. Because it connects any port to any port, it is possible to have units alarm back to a single control point. The Universal Switch prompts and control sequences are easy to incorporate into alarm software.

DCB Universal Switch

SPECIFICATIONS

General

US-08 8 ports
US-16 16 ports
US-24 24 ports
US-32 32 ports

Port Specifications

1 Start bit
8 Data bits including parity if used
1 Stop bit
10 Bits total
1200 or 9600 bps async
Connectors: RJ-45 (8-wire)
Buffered ports
Interface CCITT V.24, RS-232-D

Controls / Indicators (front panel)

Power
Reset

Setup Port (Exec)

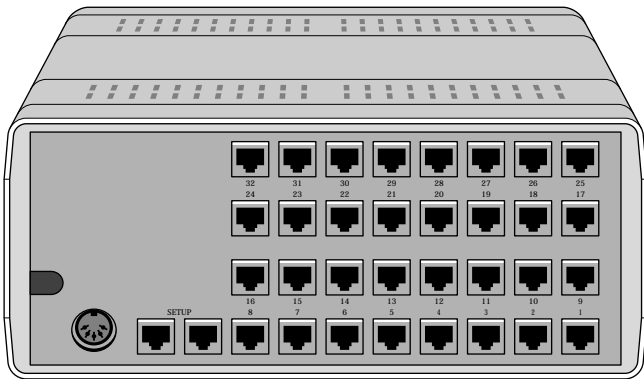
Interface: CCITT V.24, RS-232-D
Connector: RJ-45 (8-wire)
Setup port cable included

Setup Port Commands

Set Password
Set Port ID
Configure Port
Set Prompt
Set Disconnect Characters
Set Error Message
Set Wakeup
Show Type
Show Configuration
Show Port Status
Kill Connections
Exit Setup
Reset and Clear Memory
Reset and Keep Memory

Physical/Electrical

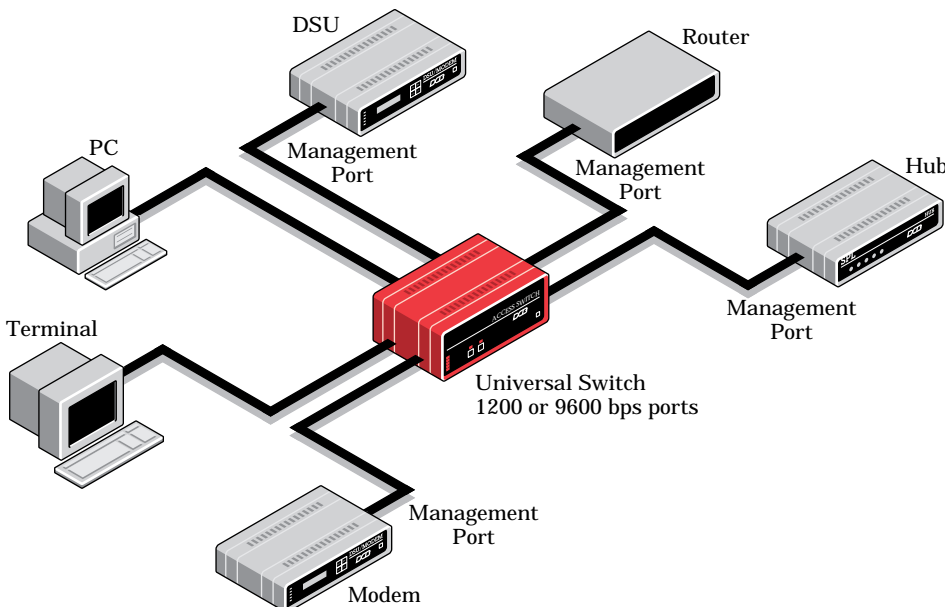
Power requirements: 120 VAC, 30-43 watts,
.25-.36 amps
10¹/₄" x 9³/₄" x 2¹/₄" (US-08, US-16)
10¹/₄" x 9³/₄" x 4¹/₂" (US-24, US-32)



Rear view of DCB Universal Switch

APPLICATION

Connect any port to any port:



Data Comm for Business, Inc.
807 Pioneer
Champaign, IL 61820
Voice 217.352.3207
800.4DCBNET
(800.432.2638)
Fax 217.352.0350
Email info@dcbnet.com