



ETHERPATH SS-1

EtherPath SS-1 Single Port Serial Server "Ethernet Modem"



DESCRIPTION

The EtherPath SS1 is a single port serial server for Ethernet LAN's. It allows a "remote" serial port for any LAN connected workstation via telnet. The EtherPath SS-1 also connects any two async serial devices through a LAN and between LAN's via routers when used in client-server mode. The EtherPath SS-1 is often used with other serial devices such as remote data collection terminals, DCB multiplexers and Access Switches, UPS's, bar code scanners, or climate control devices. It is used to connect serial management ports directly to an Ethernet network for "in-band" control of "out-of-band" devices. After installation, you simply telnet to the serial management port of the connected device.

The EtherPath SS-1 supports the TCP/IP protocol, allowing data connection across routed or switched LAN/WAN networks as well as connections on a local network.

The EtherPath SS-1 supports serial interface speeds up to 230 Kbps. The EtherPath SS-1 can automatically open connections when it powers up, eliminating the need for a manual request. Modem controls (RTS/CTS) and Xon/Xoff are also supported. If in point to point client server mode and the "nailed" connection is lost, the EtherPath SS-1's automatically reconnect when a path is available.

The EtherPath SS-1 can be managed directly through the server's physical port as well as remotely from other network locations. Remote configuration is supported using TCP/IP (telnet). Security lists are provided for management security as well as filtering which hosts can telnet to the unit.

You can telnet to the EtherPath SS-1, making the EtherPath SS-1 a remote serial port for a PC or a workstation. This makes the EtherPath SS-1 an ideal remote access device for maintaining and controlling remote devices with RS-232 serial control ports. When used with the DCB Access Switch, the single serial port can be expanded to 152 ports including remote AC power control.

FEATURES

- RS-232 Serial connection over Ethernet LAN
- PC's can Telnet to remote serial ports
- "Nailed up" client/server mode encapsulates DCB multiplexer protocol for IP LAN/WAN routing
- Use on the LAN or via Routers
- Ideal for Internet or Intranet
- It's an economical async "Ethernet modem"
- Allow In-band access to the DCB Access Switch
- RS-232 interface @ up to 230 Kbps
- Ethernet 10BaseT and BNC LAN connectors

DCB EtherPath SS-1

SPECIFICATIONS

General
RS-232 server connection over ethernet LAN
RS-232 serial port
DE-9 RS-232 male serial DTE (terminal interface) port
Serial speeds from 300 bps to 230,000 bps
RJ45 10 BaseT and BNC Ethernet, auto-selected
Supports incoming Telnet (Telnet server)
Transport portocol is routable TCP/IP
Set up via telnet command line interface or the serial port

Supports forced connections, required for connecting DCB multiplexers via LANs and routers
Modes configured via dip switches: Client-Server, Client-Server w/ Echo, Telnet Server, Configuration

Indicators
Link and Error LEDs

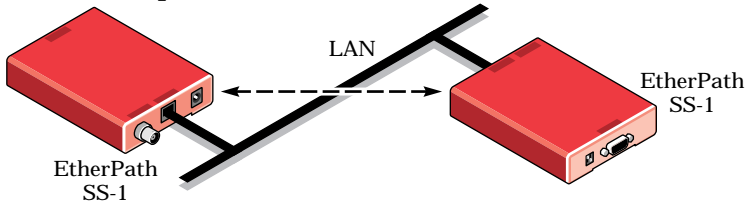
Controls
Two Dip switches used to establish operating mode.

Data Port
Interface: RS-232, V.24, speeds up to 230,000 bps

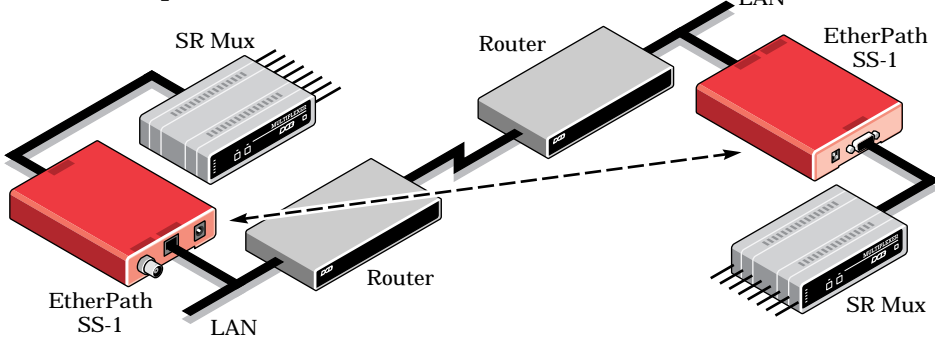
Physical/Electrical
3 1/2" x 4 3/4" x 1 1/4"
9 volt DC external 110 VAC power supply
500 mA at 9 volts
15 watts max power consumption
One Pound

APPLICATION

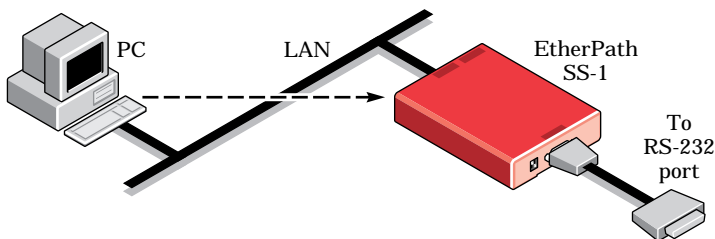
“Nailed up” Serial Link to same LAN



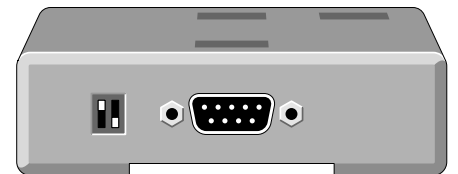
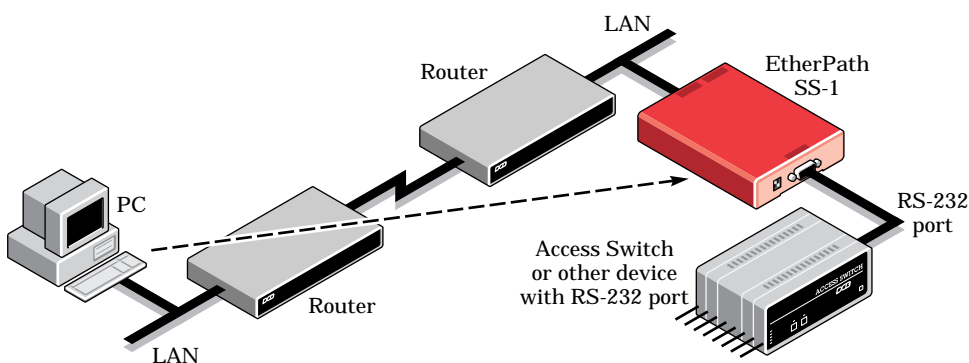
“Nailed up” Serial Link to remote LAN



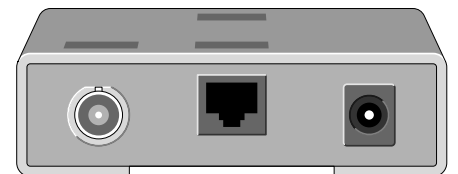
Telnet to a Serial Port on same LAN



Telnet to a remote LAN Serial Port



Front view of DCB EtherPath SS-1



Rear view of DCB EtherPath SS-1



Data Comm for Business, Inc.
807 Pioneer
Champaign, IL 61820
Voice 217.352.3207
800.4DCBNET
(800.432.2638)
217.352.0350
Fax
Email info@dcbnet.com
Web http://www.dcbnet.com