



## SR Multiplexer



### FEATURES

- Individually configured asynchronous ports
- Port speeds to 38,400 bps
- Synchronous composite to 128 Kbps, async to 57.6 Kbps
- Network Management Port
- Remote set up and testing
- Leased line, frame relay, or dial up composite
- A "One Touch Dial" for modems and ISDN
- 1, 4, 8, 16, 24, or 32 channel models
- Test message generation
- The "Data Scope" functions to allow monitoring of any data port
- A "Copy Command" for remote training
- Composite link is error corrected
- Field upgradable
- Optional internal 56 Kbps DSU/CSU
- Optional internal V.90 modem

### DESCRIPTION

The SR series statistical multiplexers concentrate 1, 4, 8, 16, 24 and 32 asynchronous channels over a synchronous or asynchronous composite link. All port parameters are easy to set using a terminal or PC connected to the management port or to port 1. Setup menus are simple, compact and self-explanatory. It takes just minutes to setup an SR multiplexer.

Terminal connections can be made at speeds up to 38,400 bps per port with composite link speeds to 128 Kbps synchronous, 115.2 Kbps asynchronous. Flow control can be set port by port to hardware or Xon/Xoff.

Terminal and printer data is typically intermittent. Therefore the port speeds on an SR multiplexer can be set so the sum of the rates of all the ports is significantly more than the composite data rate. The SR multiplexers have data buffers to momentarily store bursts of data that are faster than the composite data rate. The momentary storage is usually so short, just a few milliseconds, that it is not perceived by the terminal user.

The SR multiplexers support a variety of composite link options. The link between the SRs can be as fast as 128 Kbps, can be private line, DDS, dial up. Using the DCB EtherPath, SRs can be linked over routed IP networks. For intermittent use, the SRs have a "One-Touch" dial feature that allows dial up modem connections when a terminal key is pressed, and the modem will then disconnect after a set period of time. Another dial up feature is automatic re-connect in case a dial up line disconnects. Frame relay composite firmware is available for the SR multiplexer.

The SR multiplexers have excellent diagnostic aids. Test messages can be sent to individual ports. Ports can be looped. The entire multiplexer composite link can be looped. Data to or from a port can be monitored. Local and remote ports can be captured by the management port terminal/PC. Counters record the amount of data activity, buffer overflow or character errors on the ports. The status of flow control on each port can be checked in real time.

The SR multiplexers have a side door to access the firmware. The feature makes it easy to upgrade or change functions, such as changing a standard SR to SCADA firmware or to Frame Relay firmware. For any environment where async terminal data is transmitted, the SR is the perfect solution.

# SR Multiplexer

## SPECIFICATIONS

### General

Asynchronous Statistical Multiplexing  
1, 4, 8, 16, 24 or 32 channels  
All ports can be 38,400 bps

### Port Specifications

Data Format : 1 Start bit, 8 Data bits including parity if used, 1 Stop bit, 10 Bits total  
Rates: 300, 1200, 1800, 2400, 4800, 9600, 19200, 38400, (57600 on the SR-04) bps individually selectable per port  
Interface: CCITT V.24, RS232  
Connectors: RJ45 (8-wire)  
Buffering: 64K dynamically allocated  
Port Flow Control: Set on an individual port basis  
Xon/Xoff, Clear to Send, Busy High, Busy Low

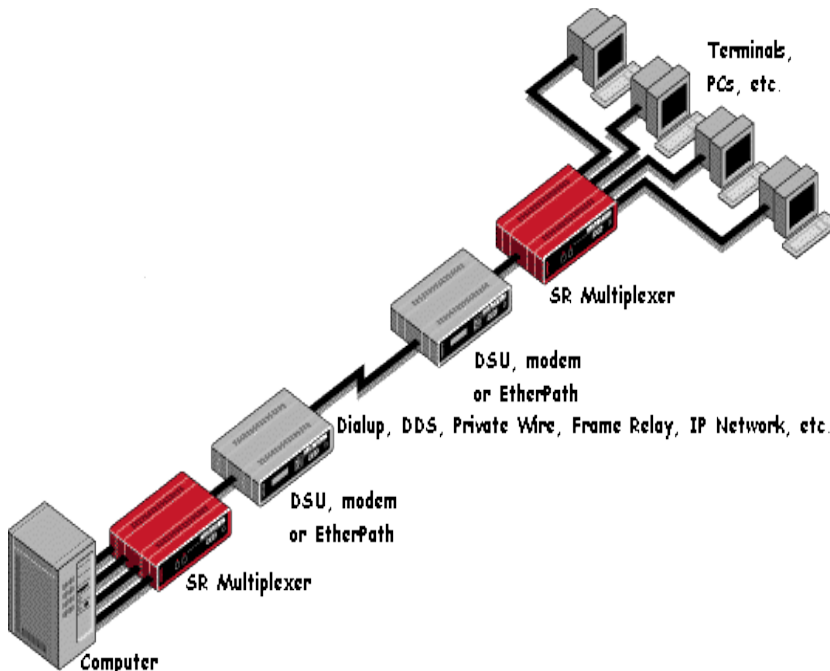
### Network Specifications

Rates: Follows modem clock signals to 128 Kbps synchronous, 57.6 asynchronous  
Interface: CCITT V.24, RS232  
Connector: RJ45 (8-wire)  
Error Correction: Automatic retransmission  
Network to modem/DSU cable included

### Network Management Port

Interface: CCITT V.24, RS232  
Connector: RJ45 (8-wire)  
Can be mapped to Port 1  
Network Management Port to terminal cable included

## APPLICATION



### Controls and Indicators (front panel)

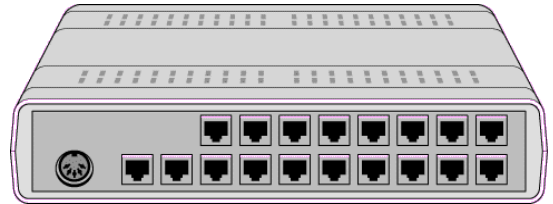
Front panel push button for loopback  
Setup via the "Port One Setup", activated by the front panel push-button, or setup via rear panel RS232 setup port.  
Indicators: Power, Activity, Line Error, Modem Ready, Port 1 Setup, Loopback

### Data Ports

1, 4, 8, 16, 24 or 32 data ports  
Interface: RS-232, V.24, speeds up to 38,400 bps  
Connector: RJ-45 per EIA/TIA 561 pinouts  
Hardware or software flow control, RTS to DCD end to end control

### Physical/Electrical

Power requirements: 120/240 VAC, external power supply is standard. 12 VDC, 48 VDC, 125 VDC also available  
-40 to +70 C operation  
60 Hz, 18 Watts, 10 1/4" x 9 3/4" x 2 1/4", 24 & 32 port units are 10 1/4" x 9 3/4" x 4 1/2", can be rack mounted or wall mounted



Rear view of 16 channel DCB SR Multiplexer



**Data Comm for Business, Inc.**

**2949 CR 1000 E**

**Dewey, IL 61840**

**Voice 8004DCBNET**

**(800.432.2638)**

**Fax 217.897.1331**

**Email [info@dcbnet.com](mailto:info@dcbnet.com)**

**Web <http://www.dcbnet.com>**