



LOOP-V™ 4300

Mini DACS, E1/T1 Converter



FEATURES

- 2, 3, or 4 ports, each provisioned for either E1 or T1 line interface, long or short haul
- Each DS0 time slot from any port can be assigned to any DS0 time slot of any port
- Each DS0 can be designated as a 64 Kbps clear channel, or as a voice channel
- Full translation of digitized voice between E1 and T1, including A-law to μ -law and signaling format
- 2-line by 16-character LCD for maintenance, performance monitoring, and administration
- Optional Ethernet port for the connection to SNMP and to Telnet
- Multicolor LED indicators for each of 4 line interfaces

DESCRIPTION

Loop-V 4300 Mini DACS E1/T1 converter provides both DS0 and $n \times 64$ Kbps cross-connect between any T1 and E1 ports and E1 to T1 format conversion functions. E1 to T1 conversion includes line format, A-law to μ -law conversion, and signaling conversion. This unit is suitable for applications involving 2, 3, or 4 ports.

ORDERING INFORMATION

To order specify:

Loop-V 4300-AA-BB-CC-DD-AJ-SNMP-PP

Where each AA, BB, CC, and DD can be:

E1 - E1 long haul & short haul

T1 - T1 short haul & short haul

AJ : advanced jitter

AA and BB must be specified

CC, DD, AJ, and SNMP are optional.

PP : DC or AC for power option

Example:

Loop-V 4300 T1-E1-E1-SNMP-AC is a unit with one T1 port, two E1 ports, and SNMP option. Power is 90-230 Vac.

SPECIFICATIONS

Network Line Interface(E1)

Line Rate	2.048 Mbps ±50 ppm
Line Code	AMI / HDB3
Input Signal	ITU G.703
Framing	ITU G.704
Connector	BNC/RJ48C
Output Signal	ITU G.703
Electrical	75ohm Coax/120ohm twisted pair

Network Line Interface(T1)

Line Rate	1.544 Mbps ± 32 ppm
Line Code	AMI or B8ZS
Input Signal	DS-1 from 0 dB to -26 dB w/ALBO
Surge Protection	FCC Part 68 Sub-Part D
Framing	D4 or ESF
Connector	RJ48C
Output Signal	DSX-1 w/0, -7.5, -15 dB LBO
Pulse Template	Per AT&T TR 62411

Performance Monitor

Performance Store

E1: Last 24 hours performance in 15 minutes interval register and last 7 days in 24 hours summary

T1: The last 24 hours performance in 15-minute intervals

Monitor Registers

E1: Line, user, D&I port, and remote site

T1: Line, user, and remote site (in ESF mode only)

Performance Reports

E1: Reports include Date& Time, Error Seconds, Unavailable Seconds, Bursty Error Seconds, Severe Error Seconds, Degraded Minutes, and Controlled Slip Seconds. Also available in Statistics (%)

T1: Reports include Date&Time, Error Seconds, Unavailable Seconds, Bursty Error Seconds, Severe Error Seconds, Controlled Slip Seconds, and Loss of Frame Count

Alarm History

Reports include Date&Time, Alarm Type (i.e. Master Clock Loss, Yellow Alarm, AIS, LOS, BPV, ES, CSS), and Location (i.e. line, PORT A, B, C, D)

Alarm Queue

Contains 40 alarm records which record the latest alarm type, location, and Date&Time

Network Management

Console Port

Connector	DB9 at Front Panel
Electrical	RS232 interface
Protocol	Menu drive VT-100 terminal

Ethernet Port (optional)

Ethernet Port

Connector	RJ45 in rear
Protocol	Telnet and Embedded SNMP

Diagnostics Test

Loopback	Line Loopback, Payload Loopback, and Local Loopback
----------	---

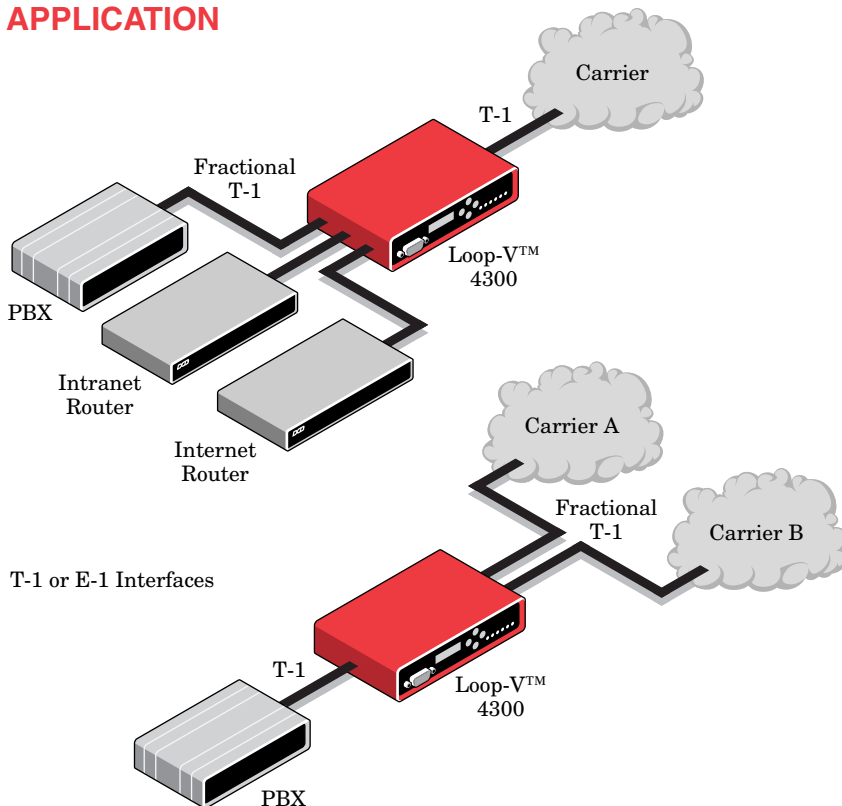
Front Panel

Keypad	4 keys: left arrow, right arrow, ESC, and ENTER
LCD	2-line by 16-character
LED	6: Power, Port A, Port B, Port C, Port D, Alarm

Physical/Electrical

Dimensions	8 ⁷ / ₁₆ " x 1 ³ / ₄ " x 7 ⁷ / ₈ " (WxHxD)
Power	20-60Vdc / 90-230Vac, 5 Watts
Temp range	0°C-50°C
Humidity	0%-95% RH (non-condensing)
Mounting	Desk-top stackable, 19/23 inch rack mountable, two units side-by-side

APPLICATION



Data Comm for Business, Inc.
 807 Pioneer
 Champaign, IL 61820
 Voice 217.352.3207
 800.4DCBNET
 (800.432.2638)
 Fax 217.352.0350
 Email info@dcbnet.com
 Web <http://www.dcbnet.com>