

HES Series Ethernet Switch

Quick Start Guide

Version 2 5/13/2009



Description:

The HES8 is an eight port unmanaged ethernet switch. It is available in Several models with various types of interfaces. All fiber interfaces use SC connectors.

Model	10/100Base Ts Ports	1000Base Tx Ports	1000BaseS X Ports	1000base LX Ports
HES8-C	6	2		
HES8-S	6			2
HES8-M	6		2	

HES8 Model Options



DCB, Inc.
2949 CR 1000 E
Dewey, Illinois
61840

217.897.6600 Tel
800.432.2638 Toll Free
217.897.1331
www.dcbnet.com

Package Contents:

Industrial ethernet switch
7-pin snap-on terminal block for two external power sources and relay connections
Blank plugs for all ports
Wall Mount kit
Quick Start Guide
Optional power supplies as ordered

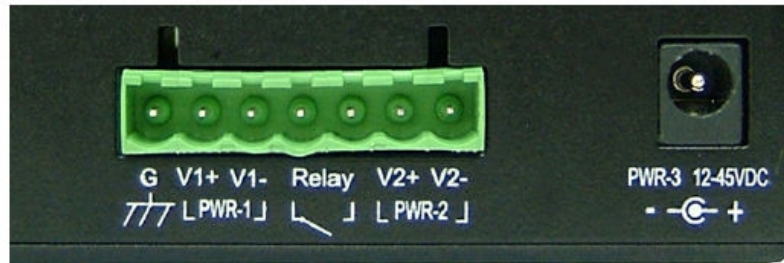
Cable Type, Max Distance, and Connectors:

Cable	Type	Max. Distance	Connector
10Base-T	Cat 3,4,5,6	UTP 100M (328 Ft)	RJ-45
100Base-TX	Cat 5,6 UTP	UTP 100M (328 Ft)	RJ-45
1000Base-TX	Cat 5, 5E, 6 UTP	UTP 100M (328 Ft)	RJ-45
1000Base-SX	850 um, multi-mode	500m	SC
1000Base-LX	1310 um, single-mode	5 Km	SC

Indicators:

Indicator	Color	Status	Meaning
PWR 1/ PWR2/ PWR3	Green	ON OFF	Power ready. Power failed or not connected.
FAULT	Amber	OFF ON	Both P1 and P2 connected and working. Power P1 or P2 failed or not connected.
Data	Green	ON Blink	No data present on fiber link. Data present on fiber link.
LINK	Amber	ON	1000Base port link established.
ACT	Green	ON	1000Base port Activity
RJ 45	Green	OFF Blink	No ethernet connection present. Ethernet traffic present.
RJ 45	Yellow	OFF ON	10 Mb ethernet connection. 100 Mb ethernet connection.

Power Connections:

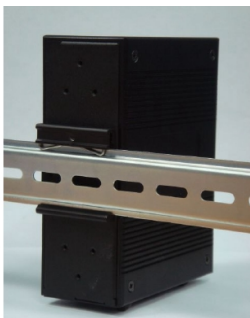


Power Connector Panel

G	Chassis ground
Relay	Fault relay - closes contacts when power is interrupted or a port fails.
PWR1	DC Power input #1 12-48 VDC
PWR2	DC Power input #2 12-48 VDC
PWR3	DC Power input #3 12-45VDC (Note 45 Volt maximum)

Connect the PWR3 power jack to the power supply. When the unit is powered solely from the included wall-mount 120VAC power supply, the FAULT light will be lit. To power the switch from a DC power supply, install the terminal block.

DIN Rail Mounting:



The switch is equipped with a din-rail bracket attached to the rear panel. To fasten the switch to the din rail, tip the switch forward and press it against the rail after aligning the bracket springs with the top rail. Then, press the bracket against the upper ledge of the din rail until it clicks.